

FFAS1711-609DA0BFO

Signature

S-T Exposed Bath & Shower Mixer-C_PWS

STYLE SEGMENT

- Modern

KEY SPECIFICATIONS

- Product Description: Signature Exposed Bath & Shower Mixer
- Bathroom Faucet Type: Exposed Bath & Shower
- Colour: Warm Sunset
- Hand Shower Included: No
- Flow Rate: 8.5 for spout
- 13.5 for shower outlet

SHIPPING WEIGHT

- Net Weight: Contact us for more information
- Gross Weight: Contact us for more information



KEY TECHNOLOGIES AND FEATURES

HYGIENE

- Complies with American Standard Quality Standards

COMFORT

- Complies with American Standard Quality Standards

CONVENIENCE

- Complies with American Standard Quality Standards

DURABILITY

- Complies with American Standard Quality Standards

SUSTAINABILITY

- Complies with American Standard Quality Standards

SAFETY

- Complies with American Standard Quality Standards

OTHERS

- NIL

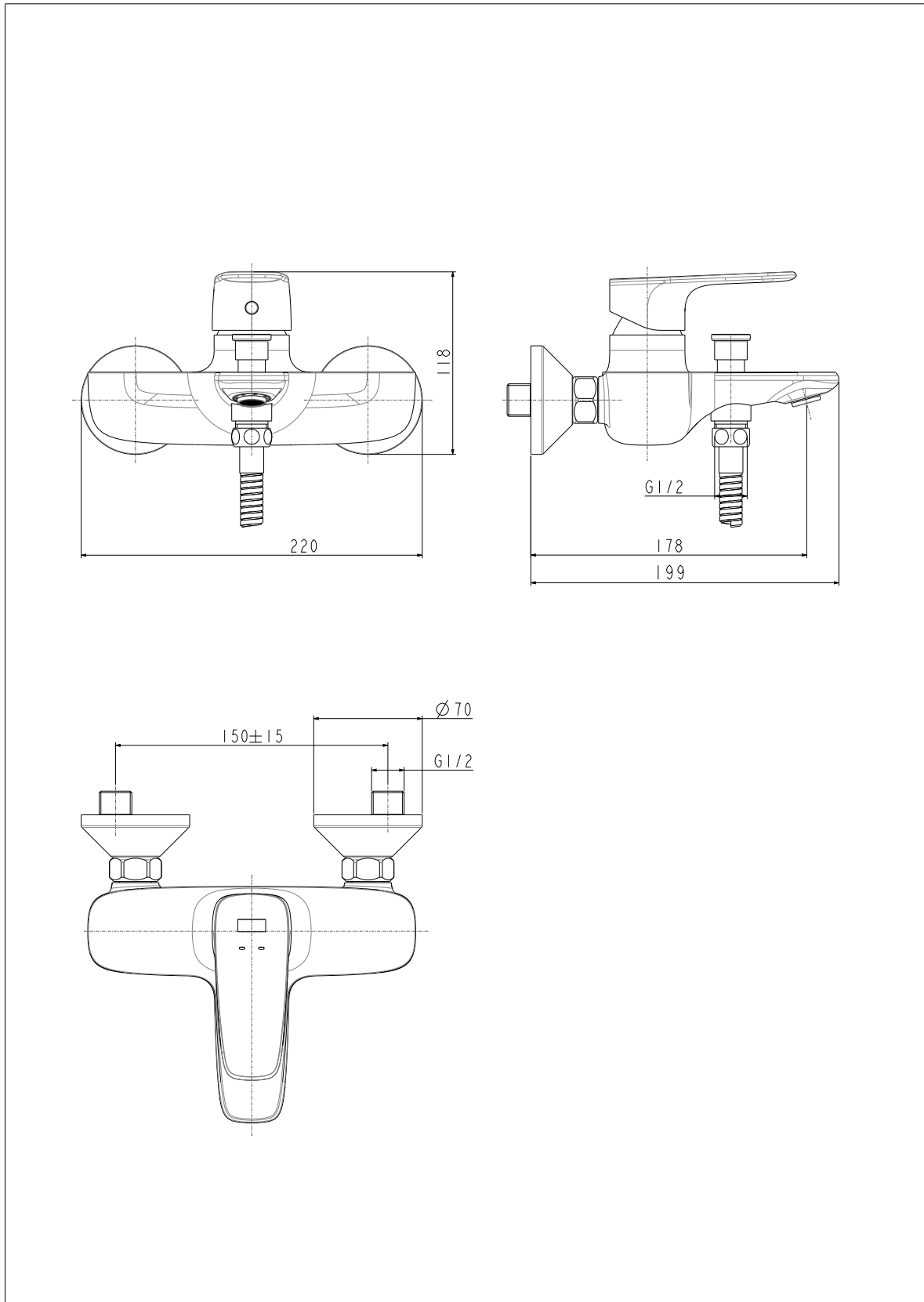
STANDARDS AND CERTIFICATIONS

- GB 18145-2014

FFAS1711-609DA0BFO

Signature

S-T Exposed Bath & Shower Mixer-C_PWS



FFAS1711-609DAOBFO

Signature

S-T Exposed Bath & Shower Mixer-C_PWS

Product	Description	Signature Exposed Bath & Shower Mixer
	Weight (kg)	2.6
	Dimensions (mm)	199 x 220 x 118
	Finish	PVD
	Flow Rate	8.5 for spout 13.5 for shower outlet
	Mounting Location	Wall Mount
Material & Color	Material	Plastic
	Color	Warm Sunset
Bathroom Faucet	Type	Exposed Bath & Shower
Faucet	Type	Mixer
Connection	Size (mm)	G1/2
	Size (inches)	G1/2
Handle	Material	Zinc Die Cast
	Type	Lever
	No. of Handles	1

FFAS1711-609DA0BFO

Signature

S-T Exposed Bath & Shower Mixer-C_PWS

Components	Hand Shower Included	No
	Included	N/A
	Excluded	Shower kit
Installation	Number of Holes Required	2
Valve	Type	Ceramic