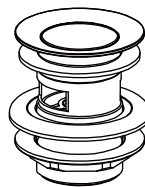
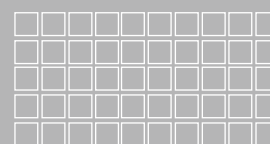


FFASTA15-000XXXBF0
FFASTA15-000XXXBT0
Push LOCK WASTE&OVERFLOW FOR LAVA

XXX = AL0 / A00 / DA0 / GL0 / 440 / 500



American Standard



**Installation &
Operation Instructions**

Thank you for selecting American-Standard - the benchmark of fine quality for over 100 years.

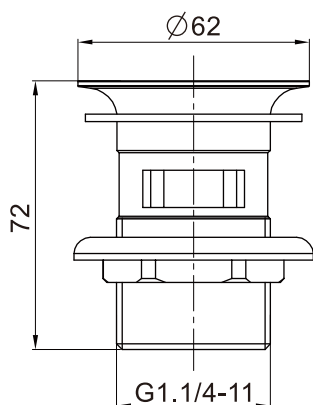
To ensure that your installation proceeds smoothly--please read these instructions carefully before you begin.

* American Standard always keep raising and improving the product design and performance, and reserve the right to modify the dimension and specification. At this case, we will not inform you separately.

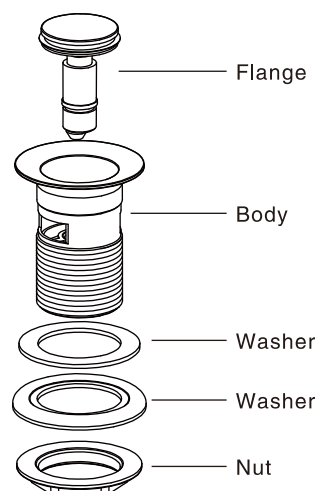
* This installation instruction sheet is for your reference only, the dimension and specification is subject to the actual products.

Dimension

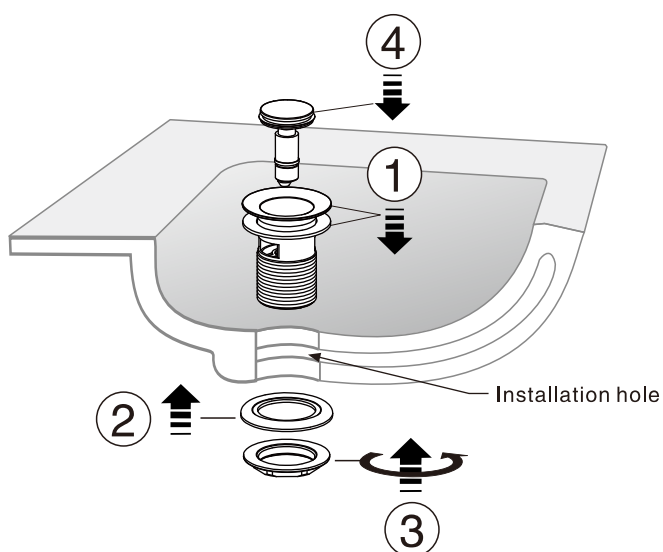
Unit: (mm)



Parts List



Installation



Care and Maintenance

Follow steps below to maintain sheen on product surface.

1. Rinse surface with clean water before drying it off with a soft cotton cloth.
2. When removing tough stains, please use PH neutral and/or alkaline cleaning solution(s) (PH value 7-9).

Attention:

1. Do not use abrasive cleaning solution/ paste.
2. Do not use abrasive cleaning tools/ implements such as (but not limited to) emery cloth and stainless steel scourer.
3. Do not use acidic cleaning solution/ paste.