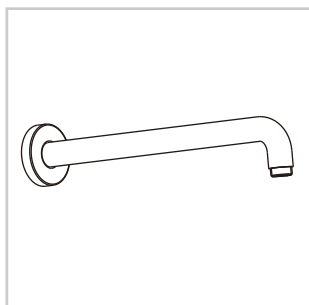
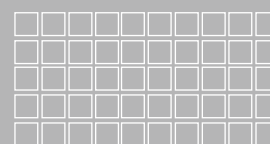


FFAS9909-000XXXBF0
FFAS9909-000XXXBT0
Wall Mounted Shower Arm

XXX = AL0 / A00 / DA0 / GL0 / 440 / 500



American Standard



**Installation &
Operation Instructions**

Thank you for selecting American-Standard - the benchmark of fine quality for over 100 years.

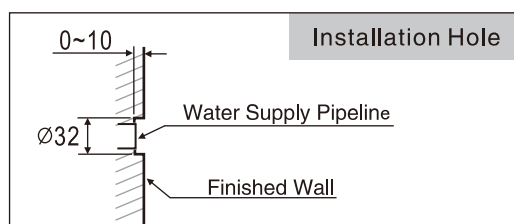
To ensure that your installation proceeds smoothly--please read these instructions carefully before you begin.

* American Standard always keep raising and improving the product design and performance, and reserve the right to modify the dimension and specification. At this case, we will not inform you separately.

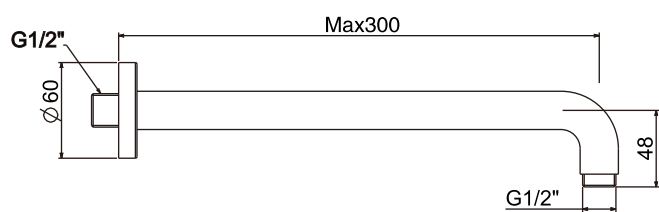
* This installation instruction sheet is for your reference only, the dimension and specification is subject to the actual products.

Dimension

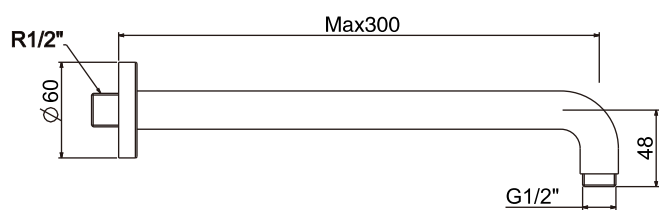
Unit: (mm)



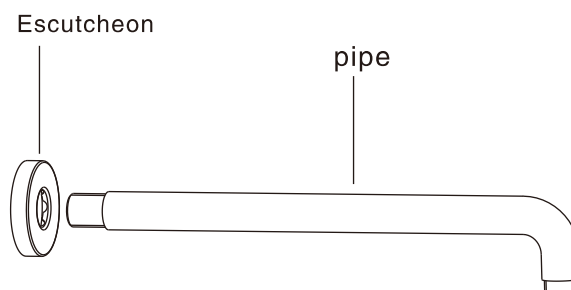
FFAS9909-000XXXBF0



FFAS9909-000XXXBT0

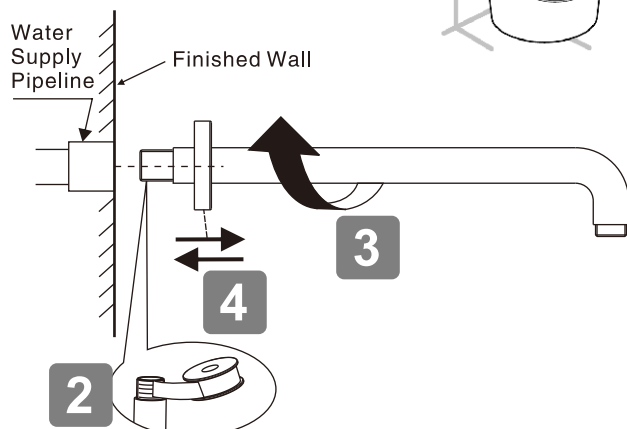


Parts List



Installation

- * Consult the dimension drawing and lay the pipes.
- * Wash and clean the water supply pipeline.



Maintenance

1. Keep the product clean with clean water or mild liquid detergent regularly.
 2. Rinsed off with clean water, and wiped dry with soft cotton.
- Acid or abrasive detergents are prohibited.

Please use together with American Standard shower heads, this product only connect with the shower head, other objects is forbidden.
For your safety, should not be over loaded 15kg.

Conditions for use

- * Recommended water pressure condition: 0.1Mpa~0.5Mpa.
- * Steam is not allowed to use
- * Environment Temperature: 1 ~ 55°C.