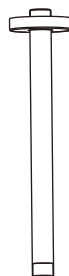
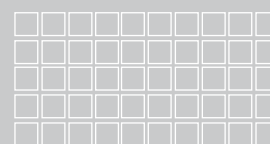


FFAS9908-000XXXBF0
FFAS9908-000XXXBT0
Top Installation Shower Arm

XXX = AL0 / A00 / DA0 / GL0 / 440 / 500



American Standard



Installation &
Operation Instructions

Thank you for selecting American-Standard - the benchmark of fine quality for over 100 years.

To ensure that your installation proceeds smoothly--please read these instructions carefully before you begin.

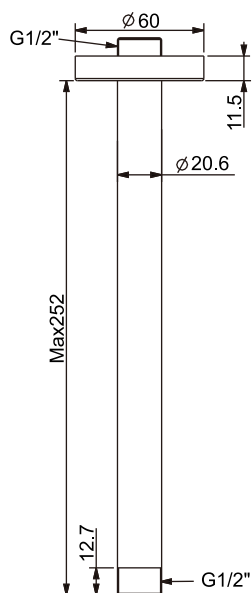
* American Standard always keep raising and improving the product design and performance, and reserve the right to modify the dimension and specification. At this case, we will not inform you separately.

* This installation instruction sheet is for your reference only, the dimension and specification is subject to the actual products.

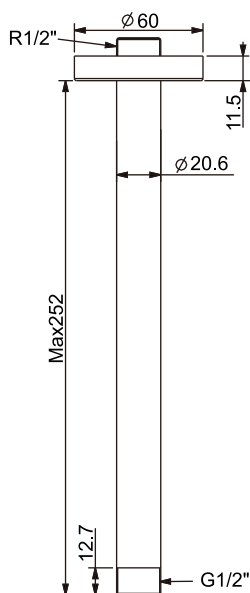
All instruction procedures must comply in strict accordance with applicable local plumbing and building codes

Dimension

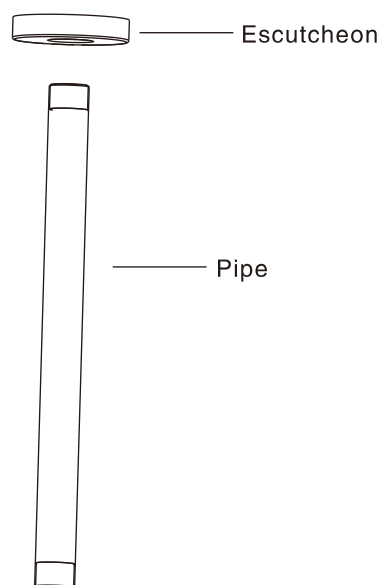
FFAS9908-000XXXBF0



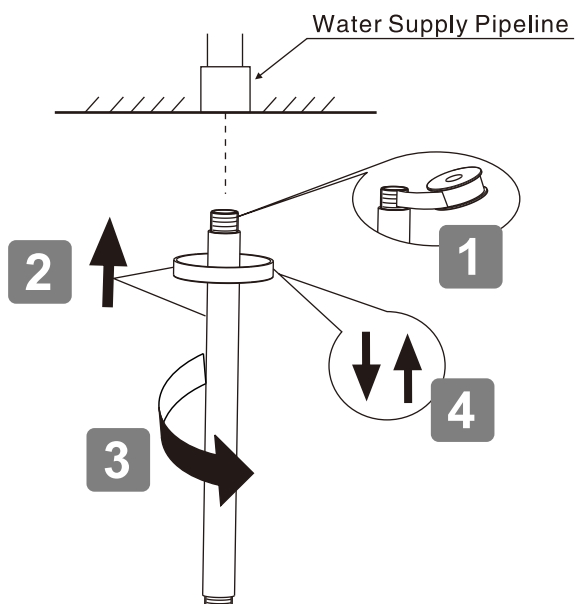
FFAS9908-000XXXBT0



Parts List



Installation



Maintenance

1. Keep the product clean with clean water or mild liquid detergent regularly.
 2. Rinsed off with clean water, and wiped dry with soft cotton.
- Acid or abrasive detergents are prohibited.

Please use together with American Standard shower heads, this product only connect with the shower head, other objects is forbidden.
For your safety, should not be over loaded 15kg.

Conditions for use

- * Recommended water pressure condition: 0.1Mpa~0.5Mpa.
- * Steam is not allowed to use
- * Environment Temperature: 1 ~ 55℃.