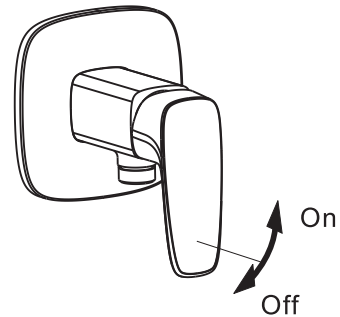


Test / Usage

1 Test

- \* Push lever down to 'OFF' position. Open water supply valve to check all connections for leakage(s).
- \* Lift lever up to 'ON' position. Check that water is flowing.

2 Usage

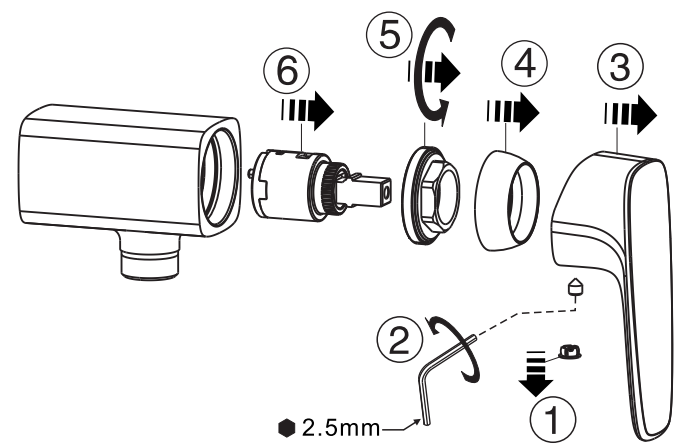


Trouble Shooting Guide

Issue	Component	Checkpoint	Corrective Action
Poor flow rate	Shower	Check if shower is clogged	Remove all impurities
	Water supply valve	Check lever position	Lift lever to maximise water volume
	Flexible hose	Check if flexible hose is twisted	Untwist the flexible hose
Leakage	Cartridge	Check if cartridge is loosened	Fasten or replace cartridge
	Connection joints	Check the connection	Reassemble connecting part

Care & Maintenance

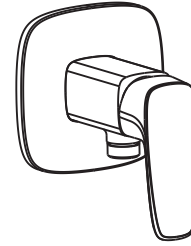
- \* Clogged cartridges due to poor water quality can affect product performance.
- \* Follow steps below to maintain optimal product performance.
- \* Note: please turn off water supply before maintenance process.



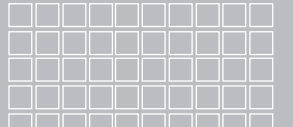
**Attention:**  
Please leave manual with customer  
post installation.

Signature

FFAS1726-701500BT0  
Signature Exposed Shower Mono



American Standard



Installation &  
Operation Instructions

Thank you for selecting American Standard the benchmark of fine quality for over 100 years.  
To ensure that your installation proceeds smoothly, please read these instructions carefully before you begin.

- \* American Standard continually improves our product design and performance and reserves the right to modify the dimension and specification of our product accordingly without any prior notification.
- \* Actual dimensions and specifications may vary, refer to physical product for exact dimensions and specification.

Pre-Installation Checks

- \* Remove all impurity in pipes before beginning to avoid clogging. Connect the faucet pipes correctly.
- \* Check installation distances shown in the dimension diagram to ensure correct installation.
- \* Warning: Avoid lifting/ holding product lever only during installation. Instead, hold product spout/ main body.

Conditions for use

- \* Water pressure condition: 0.05~0.75MPa (Recommended water pressure condition: 0.1~0.5MPa)
- \* Ambient temperature: 1~55℃
- \* Water temperature: 4℃ ~ 90℃
- \* Steam should not be used with product.
- \* Note: Ensure water source is clean. Poor water quality can cause cartridge and internal components to clog, resulting in poor volume control and/ or product failure.

Recommended Tools and Materials



Adjustable Wrench



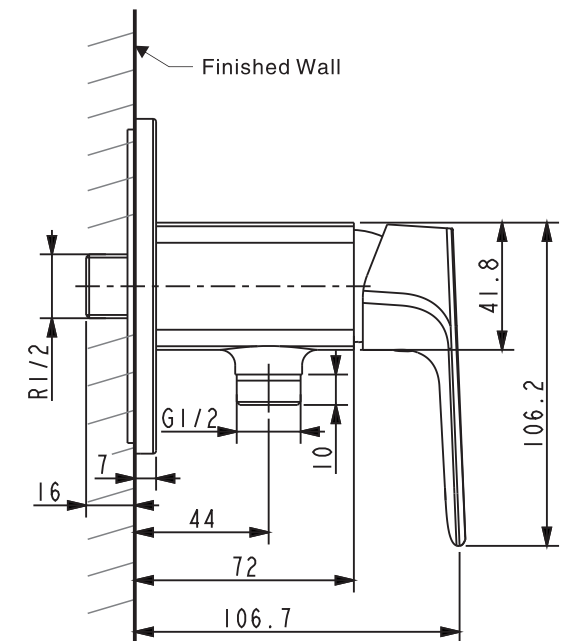
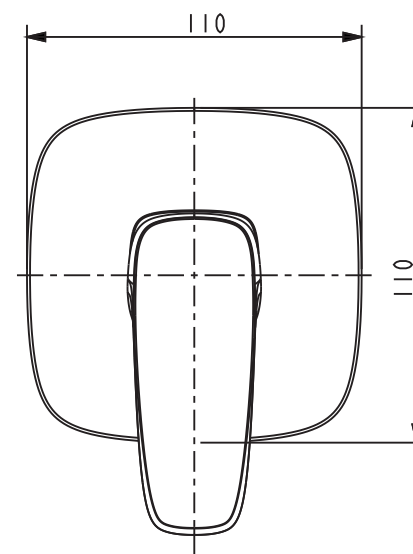
Teflon Tape



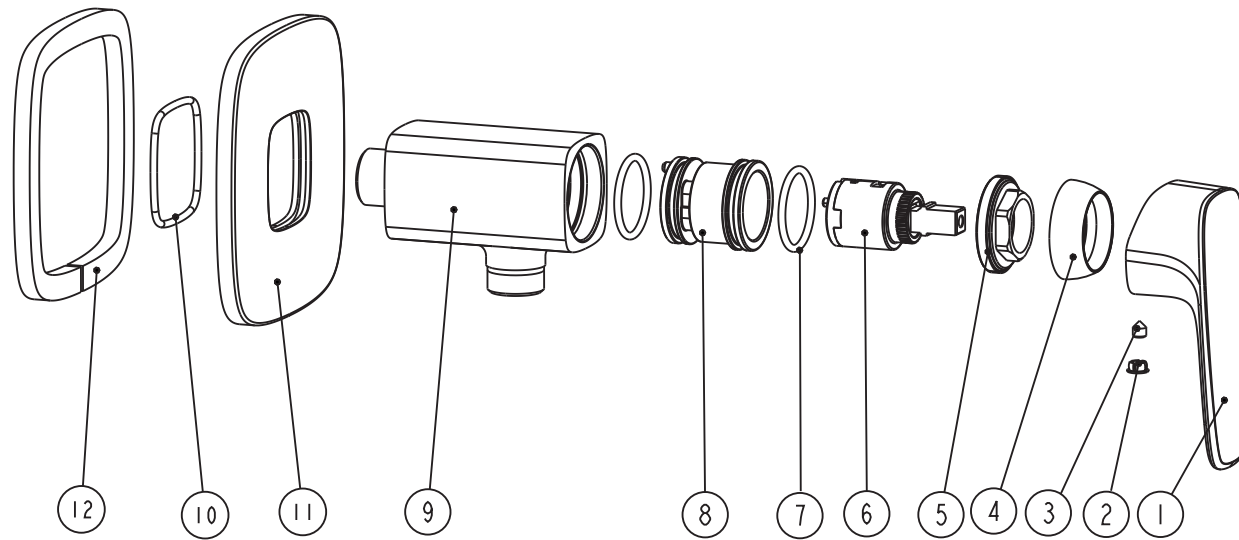
Pencil

Dimension

Unit: mm



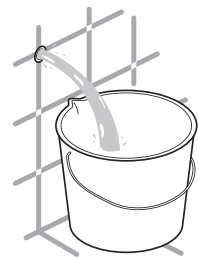
## Parts List



## Parts List

No.	Part Name	Q'ty
1	Lever	1
2	Cap	1
3	Screw	1
4	Cover	1
5	Nut	1
6	Cartridge	1
7	O-ring	2
8	Manifold	1
9	Body	1
10	Washer	1
11	Escutcheon	1
12	Washer	1

## Preparation



- \* Lay cold & hot supply pipes based on dimension drawing.
- \* Before installation, the laying of pipeline is rinsed clean.

## Installation

